

ENTRY WALKWAY *This page and opposite*
Offset stool by Philippe Malouin from Janie
Collins Interiors. Le Corbusier 'Applique
de Marseille' wall light, Cult (throughout).
Porteno weekender bag, Pampa. Tray,
Living Edge. Joinery by McAtamney
Cabinets (throughout).



Walk this way

One Brisbane couple's desire for an "interesting" home developed into a dramatically different take on the traditional Queenslander.

STORY *Jackie Bryggel* | STYLING *Lynda Owen* | PHOTOGRAPHY *Kylie Hood*

Rising above a street in north-east Brisbane, this dramatically reborn 1950s Queenslander basks in its tranquil setting. Unpretentious yet undeniably special, the house ensures a relaxed lifestyle for its owners, Hannah and David Hodson, without ignoring its postwar roots. Most of all, Hannah and David - who share the home with their daughters, Murphy, three, and Bronte, almost one - say it's a house that's distinctly 'them'.

"We bought the property in late 2017," says David. "The existing house was a fairly poky weatherboard decorated in a heritage colour scheme, but it was sitting on a 920-square-metre corner block. We could see what a great opportunity it presented."

After living in the home as it was for almost a year, Hannah and David called interior designer Ian Wrightson of Wrightson Stewart to help them update it. "Hannah and David came to us because they were keen on a previous project of ours where we had adapted the original architecture plus added an interesting extension," explains Ian. "Here, old and new are likewise connected in an interesting way."

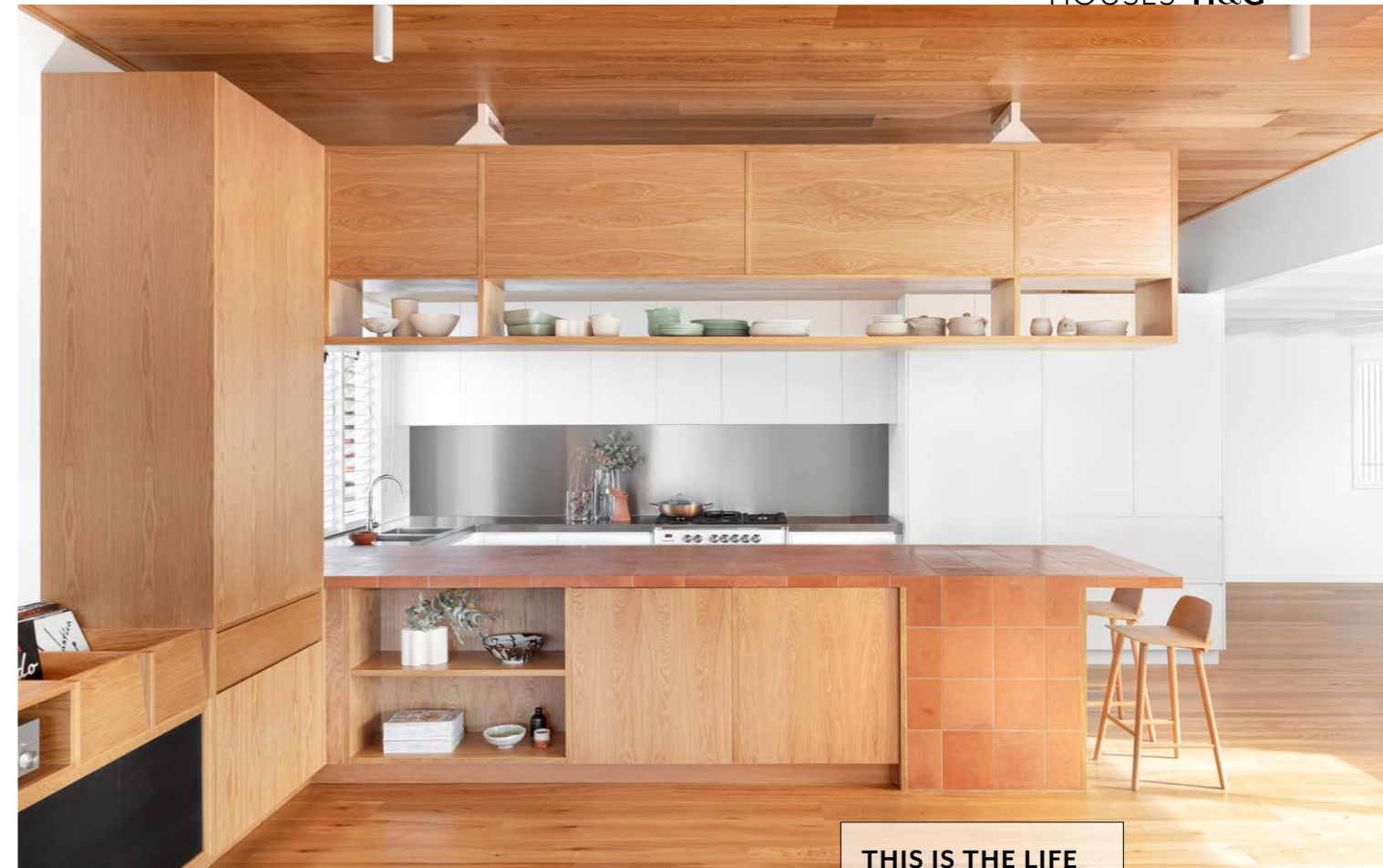
Working collaboratively with architect Barbara Bailey of BoARC and JCW Builders, the Wrightson Stewart team drew up plans for a full-scale renovation and extension that takes its cues from the Arts and Crafts movement, with modest form and thoughtful craftsmanship. Over a period of eight months, the design took shape, delivering on the request for family functionality with distinct zones.

The layout in the original residence was reconfigured as the children's domain and includes two bedrooms, one bathroom, family ▶

DINING An American-oak banquette frames the dining zone. Studio Nitzan Cohen for Mattiazzi 'Solo' chairs, Janie Collins Interiors. Existing dining table. Assorted cushions from Pampa and Tigmi Trading. Sideboard finished in American-oak veneer with Dulux China White drawer fronts.



FINE DETAILS CARRY THROUGH THE INTERIOR, LENDING A HANDCRAFTED QUALITY TO THE HOME.



THIS IS THE LIFE

The designers took every opportunity to draw natural light, breezes and lush vistas into the home and Hannah and David are certainly delighted with the end result. "Ian and his team encouraged us to go in a direction we might not otherwise have been brave enough to do," says David, "And we're so happy that they did. It's certainly not a home we're going to grow out of, but one I can see us enjoying for a long time to come."

room and study. In the luminous extension are an airy main bedroom suite and open-plan kitchen/dining/living area. The home's main entrance sits between the two in a show-stopping walkway. Clad in white-painted battens, the walkway functions as a light well and breakout space, and eases the transition between old and new. American-oak joinery extends the length of the link, which helps keep the clutter of family life under control.

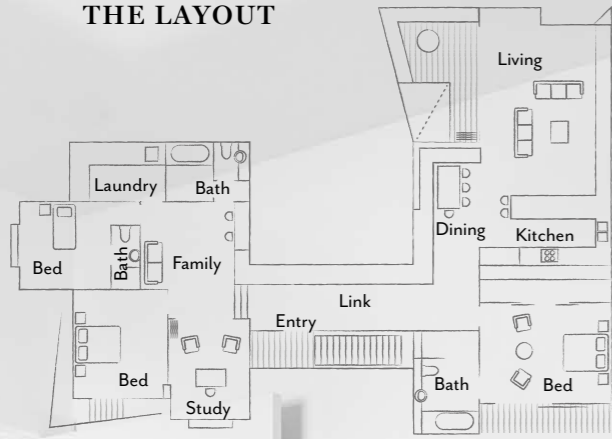
Inside, the home is understated and beautifully earthy, with expanses of tactile American oak and terracotta providing warmth and textural contrast to the crisp white walls and clean-lined furnishings. "The terracotta references the roofing material of the surrounding homes," says Ian. "We incorporated various apertures and openings to draw glimpses of terracotta into the interior, and tiled the kitchen island in terracotta to continue this thread. I think it has to be one of my all-time favourite kitchens."

There's a bold interplay of lines and angles in every room, delivering a strong sense of drama. "The furnishings are quite linear, which creates beautiful angles and plays of light and shadow that change throughout the day," says Ian.

Every detail has been thoughtfully considered. In the dining area, the generous banquette seating segues into the joinery in the adjacent entry link. In the girls' bathroom, lively green, grey and gold floor tiles are a colourful surprise. Then there's the DJ booth in the ▶

KITCHEN *Above and opposite* American oak, used here for both joinery and flooring, is a unifying thread throughout the home. Muuto 'Nerd' stools, Living Edge. Island bench clad in Cotto Manetti 'Naturale' terracotta tiles from Artedomus. Etnico runner, Pampa. Cushions from Tigmi Trading (on sofa).

THE LAYOUT



THE PALETTE

Dulux Lexicon Quarter (throughout)	Porter's Paints Apple Cider	Porter's Paints Evergreen
---	--------------------------------	------------------------------



Paint colours are reproduced as accurately as printing processes allow.

MAIN BEDROOM *This page and opposite* BassamFellows 'Geometric' lounge chair and 'Circular' stool, both from Living Edge. Snoopy table lamp by Achille & Pier Giacomo Castiglioni from Euroluce. Monte rug, Pampa. Custom American oak bed with built-in bedside unit. Bedlinen, Carlotta+Gee. ▶

living zone: "Hannah and David love their vinyl!" says Ian, laughing. "The spaces are designed to provide an opportunity to explore as you walk through them. Everything is purpose-built. To me, if decoration doesn't have a purpose, then there's no real point in it."

Landscape architect James Birrell is currently completing the dreamy package, rejuvenating the wraparound garden with native plantings, including tea trees, gums, tree ferns and banksia. "It was important to us to use species that are endemic to the area," says David. "We also hope to add a pool in the future."

For all concerned, this joyously left-of-centre project has proven a delight to bring to life. And now the family is continuing to make the home very much their own. "Our home references the heritage of the area, but in an interesting and unique way," says David. "We're enjoying growing into the home."

H&G

Wrightson Stewart, Fortitude Valley, Queensland; wrightsonstewart.com.au. BoARC, Paddington, Queensland; 0412 362 361. JCW Builders, Wavell Heights, Queensland; jcwbuilders.com.au.



"I THINK THIS HOUSE HAS A DISTINCTLY BRISBANE FEEL." Ian Wrightson, interior designer



STUDY NOOK Anglepoise lamp, Cult. Uncino Version B chair, Janie Collins Interiors. Gufram 'Cactus' coat stand, Living Edge. **CARPORT** Weatherboards and fence painted Dulux Lexicon Quarter. "The white makes everything feel so fresh," says Ian. **FAMILY BATHROOM** Tapware, Meir. Neo Mini basin, Reece. Ceramica Vogue 'Ghiaccio' wall tiles. Pittorica floor tiles, Classic Ceramics. *For Where to Buy, see page 192.*

